



GRANDSTREAM

CONNECTING THE WORLD



AGENDA

1 COMPANY OVERVIEW

2 IP SOLUTIONS PORTFOLIO

3 GXP2170 FEATURES

4 INTEROPERABILITY

5 PROVISIONING

6 TOOLS



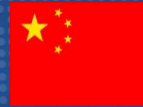
- **Founded in 2002**
- **Over 500 employees**
- **Product Portfolio contains over 40 products: *Video Conferencing System, 20 different IP Phones, 5 ATAs, 10 IP Surveillance cameras, 5 Video Encoder/Decoders & 2 IP PBXs***
- **Primarily serving small-to-medium size businesses (SMBs) and consumer markets**

US



Boston - Headquarters
Los Angeles, CA
Dallas, TX

China



Hangzhou, Shenzhen
Hong Kong - Warehouse

Morocco



Casablanca - Support Center, EMEA

Venezuela



Venezuela- Support Center, LATM

Netherlands



Moerdijk - Warehouse

Awards & Recognition



14 time winner



9 time winner



2 time winner



Global Presence



Over 10 Years of Growth and Innovation...



Product Interoperability

IP-PBX and Softswitch



ITSPs



Product Interoperability

Door Intercom



VoIP Applications, Services, and Hardware



Video Management Systems



Driving network video through global standardization



VoIP Product Lines

IP Multimedia Phones

Enterprise IP Phones

Small Business / Home Office IP Phones

Analog Gateways & ATAs

IP PBX Appliances

Video & Audio Conference Systems



Surveillance Product Lines

Box IP Cameras

Cube & Mini Dome IP Cameras

IP Video Encoders

Outdoor IP Cameras

Video Management Software

Network Video Recorder



Grandstream's Long History of Open Source

SIP



ANDROID

Android is a Registered Trademark of Google Inc.



Asterisk is a Registered Trademark of Digium



GXP2170

Enterprise IP Phone



- 4.3" color display LCD
- Integrated Bluetooth, USB and EHS
- 12 line keys with 6 SIP accounts and 5-way conferencing
- Dual Gigabit networks ports & built-in PoE
- 48 digitally programmable BLF/Fast Dial keys, and supports up to 4 GXP2200EXT modules



Voice Codecs



- G.711 u/a-law
- G.722 (wideband)
- G.726
- G.729 A/B
- Ilbc
- In-band/out-of-band DTMF



Feature Keys



- 12 Line Keys
- 5 XML programmable softkeys
- Message (with LED Indicator)
- Phonebook
- Transfer
- Conference
- Hold
- Headset
- Mute
- Send/Redial
- Speakerphone
- Vol + / Vol -



Auxiliary Ports



- Dual switched auto-sensing 10/100/1000Mbps Gigabit Network Ports
- PoE
- USB
- Extension module port for GXP2200EXT
- EHS with Plantronics headsets
- Rj9 headset jack



Headset Compatibility



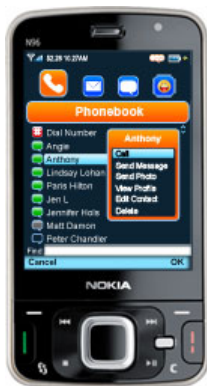
- Use Bluetooth for wireless Bluetooth headsets
- Supports EHS for Plantronic's headsets
- Rj9 headset jack





Bluetooth Features

1. Data exchange between mobile phone and GXP2170 (phonebooks, calendars)





Bluetooth Features

2. Call transfer from Android phone & iPhone to GXP2170





Bluetooth Features

3. Pair with Bluetooth headset



Create a Total IP Solution With the UCM Series IP PBX



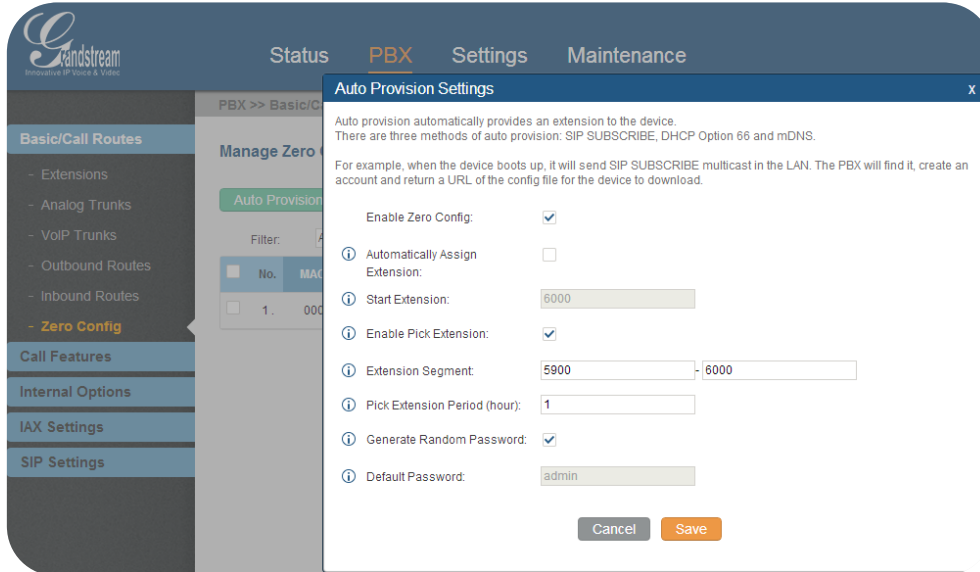
- Auto-Discovery, ZERO Configuration
- 1-touch call recording
- Call Detail Records (CDR)
- Music-on-hold
- Easily connect to LDAP Phonebooks
- Conference Rooms
- Remote-Extension BLF



Auto-Provisioning

Step 1

- Enable Zero Config
- Enable Pick Extension
- Configure Extension Segment
- Pick Extension Period

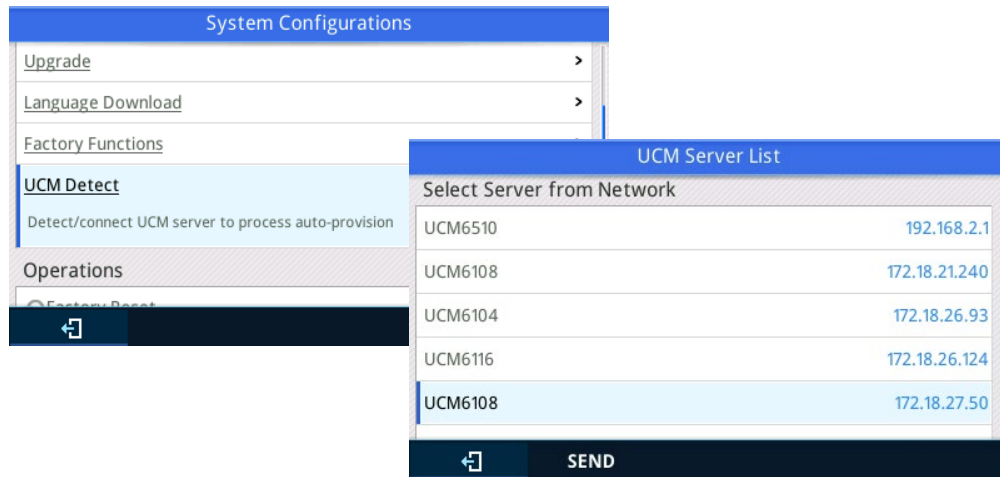
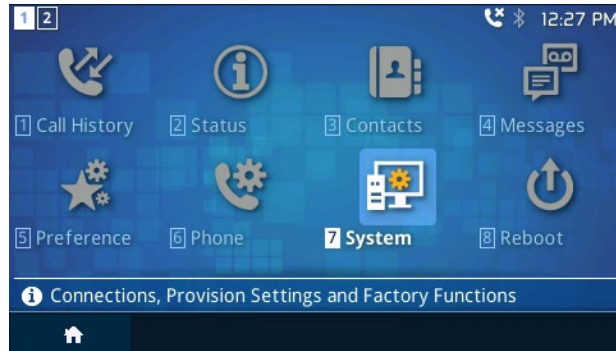


The screenshot shows the Grandstream PBX web interface. The left sidebar contains navigation menus for Basic/Call Routes, Call Features, Internal Options, IAX Settings, and SIP Settings. The main content area is titled 'Manage Zero' and includes an 'Auto Provision' button. A modal window titled 'Auto Provision Settings' is open, displaying the following configuration options:

- Enable Zero Config:
- Automatically Assign Extension:
- Start Extension: 6000
- Enable Pick Extension:
- Extension Segment: 5900 - 6000
- Pick Extension Period (hour): 1
- Generate Random Password:
- Default Password: admin

Buttons for 'Cancel' and 'Save' are located at the bottom of the modal.





Auto-Provisioning

Step 2

- Detect the IP PBX on the GXP2170's LCD
- Manually enter or select the IP PBX's server
- Send a request to obtain account list from the IP PBX



User-Account Selection

User to Select
4000 >

Account to Apply
Account 1 >

! Assign User successfully, upgrade will start shortly

Dismiss

User-Account Selection

User to Select
4000 >

Account to Apply
Account 1 >

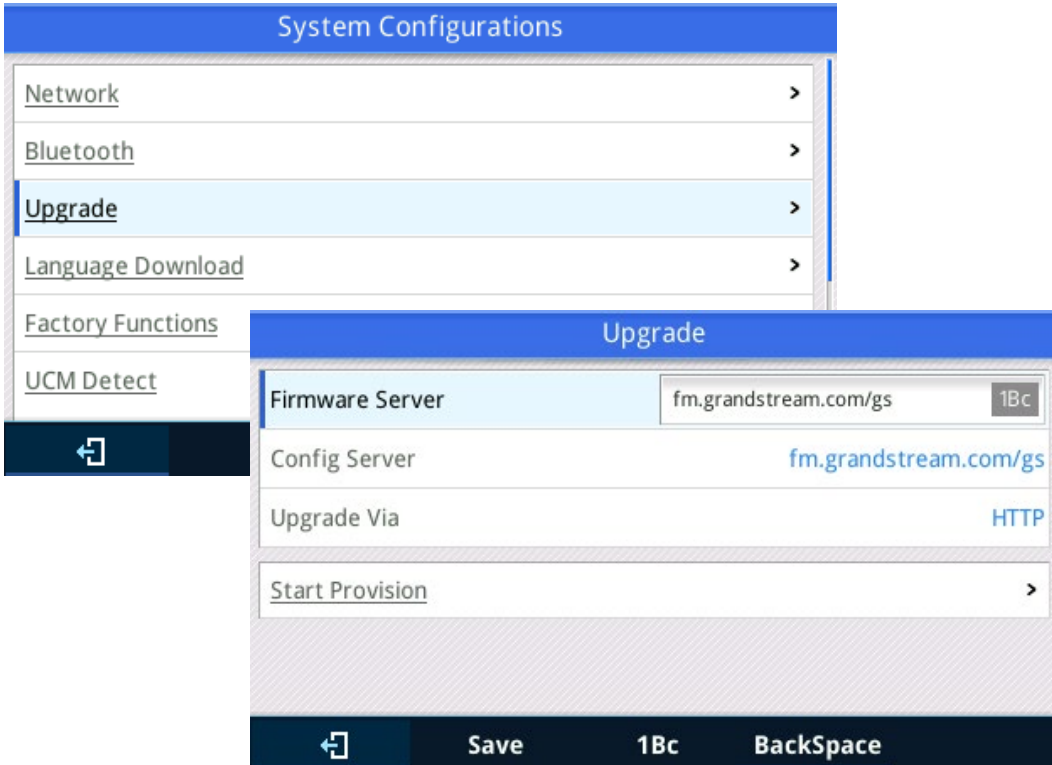
← OK Select

Auto-Provisioning

Step 3

- Select available extensions detected from the IP PBX on the phone
- Select the account on the phone
- Get registered





Firmware Upgrades

- Firmware upgrade via TFTP/HTTP/HTTPS
- Upgrade options via keypad menu, Web GUI





Digitally Programmable BLF/Fast-Dial Keys

- 48 digital on-screen fast-dial/BLF keys
- 12 on-screen keys visible per page, scroll through 4 screen pages to access all entries
- Option to use the GXP2200EXT module for an additional 160 fast dial/BLF keys



XML Applications

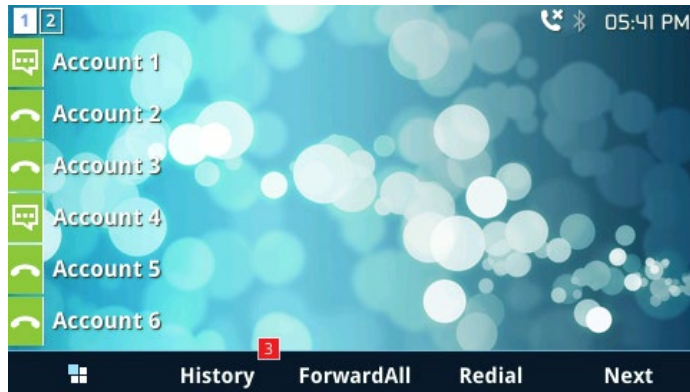
Idle Screen

Idle Screen XML Download

Download Screen XML at Boot-up No Yes

Use Custom Filename No Yes

Idle Screen XML Server Path



Screen Customization Tool

- Customize the idle screen layout
- Customize the logo, text or system variables to be displayed
- Configuration through the Web GUI
- Uses XML API Architecture





Wallpaper Customization

- Choose any photo, company logo or background image
- Configuration through the Web GUI



Phonebook Management

Enable Phonebook XML Download	<input type="text" value="Enabled, use HTTP"/>
Phonebook XML Server Path	<input type="text" value="192.168.1.1/phonebook"/>
Phonebook Download Interval	<input type="text" value="0"/>
Remove Manually-edited Entries on Download	<input type="radio"/> No <input checked="" type="radio"/> Yes
Download XML Phonebook	Download
Upload XML Phonebook	Upload
Save Save and Apply Reset	

Download XML Phonebook [Download](#)

Upload XML Phonebook [Upload](#)

XML Phonebook Tool

- Store up to 2000 contacts
- Share and maintain a phone book via the web
- Uses XML API Architecture as a download and upload method through the phone's web GUI
- Store the XML phone book file on a web server for easy access for each phone to download



GXP2170 Resources

www.grandstream.com



- Full product specs
- Product datasheets (8 languages)
- User Manual
- Quick Installation Guide
- IOT guides
- Provisioning Guides
- Technical How-To
- Videos



Thank you

Any Questions?



CORPORATE HEADQUARTER

126 Brookline Ave, 3rd Floor
Boston, MA 02215

Voice: +1 617-566-9300
Fax: +1 617-249-1987



OFFICE LOCATIONS

NORTH AMERICA

Los Angeles

1208 John Reed Court
City of Industry, CA 91745
Voice: +1 626-638-9172
Fax: +1 617-249-1987

Corporate Headquarters

126 Brookline Ave, 3rd Floor
Boston, MA 02215
Voice: +1 617-566-9300
Fax: +1 617-249-1987

Dallas

2301 W. Plano Pkwy Suite 208
Plano, TX 75075
Voice: +1 469-241-0100
Fax: +1 617-249-1987

EUROPE, MIDDLE EAST & AFRICA

Casablanca, Morocco

ASIA

Shenzhen, China

Hangzhou, China

Petaling Jaya, Malaysia

SOUTH AMERICA

Valencia, Venezuela

